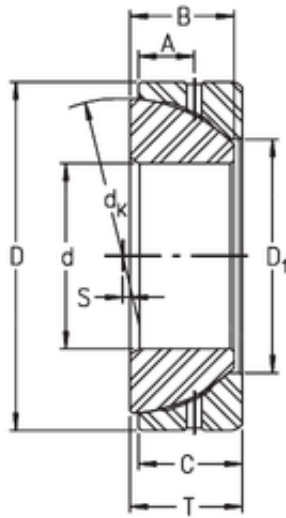




TLEE Bearing Machine Development Co.,...



Timken GE45SX plain bearings

Bearing No. GE45SX

Size	45x75x20 mm
Bore Diameter	45 mm
Outer Diameter	75 mm
Width	20 mm
d	45 mm
D	75 mm
T	20 mm
B	19 mm
C	19 mm
dk	66 mm
s	1,5 mm
A	10 mm
D1	52,9 mm
Weight	0,41 Kg
Basic dynamic load rating (C)	106 kN

GE45SX Bearing 2D drawings and 3D CAD models